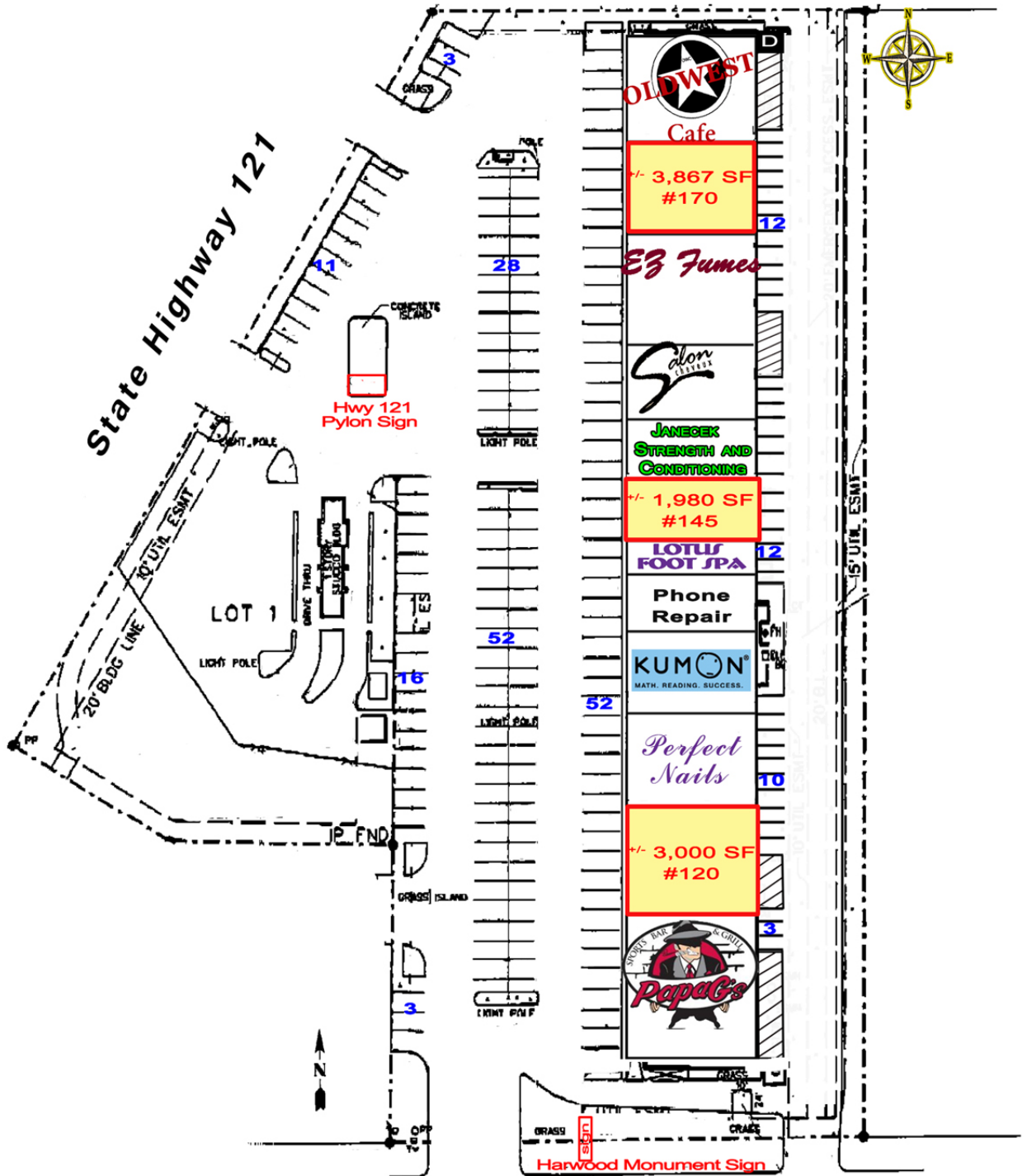


ST. MICHAEL'S SHOPPING CENTER
 2900 S HWY 121 • BEDFORD TEXAS 76021

SITE PLAN



Harwood Road



The information contained herein was obtained from sources believed reliable; however, Quine & Associates, Inc. makes no guarantees, warranties or representation as to the completeness or accuracy thereof. The presentation of the property is submitted subject to errors, omissions, change of price or conditions prior to sale or lease or withdrawal without notice.