

INDUSTRIAL WAREHOUSE

1172 107th Street ■ Grand Prairie TX 75050



✓ **Total Square Feet**
20,500 SF Total

✓ **Office Area**
2,976 SF

✓ **Electrical Service**
2000 Amp / 3 Phase Power

✓ **2 Dock High Doors**

✓ **1 Grade Level Door**

✓ **15' Clear Height**

✓ **Easy access from Hwy 360 and I-30**

✓ **North Great Southwest Industrial District**

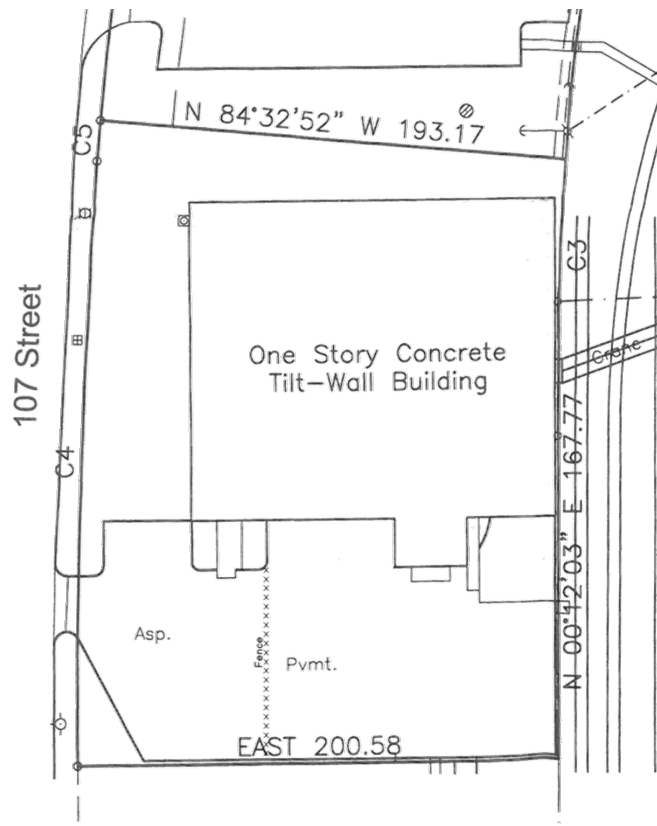
✓ **Zoned - Light Industrial**

Demographics: 2020 *within a 3 mile radius*

Population: ±96,790

Average HH Income: ±\$67,071

Day Time Employment: ±71,002



For more information contact:
Quine & Associates, Inc.
Texas Real Estate Broker

Ann Cloud Ngo
ngo@quine.com

Texas Real Estate Broker



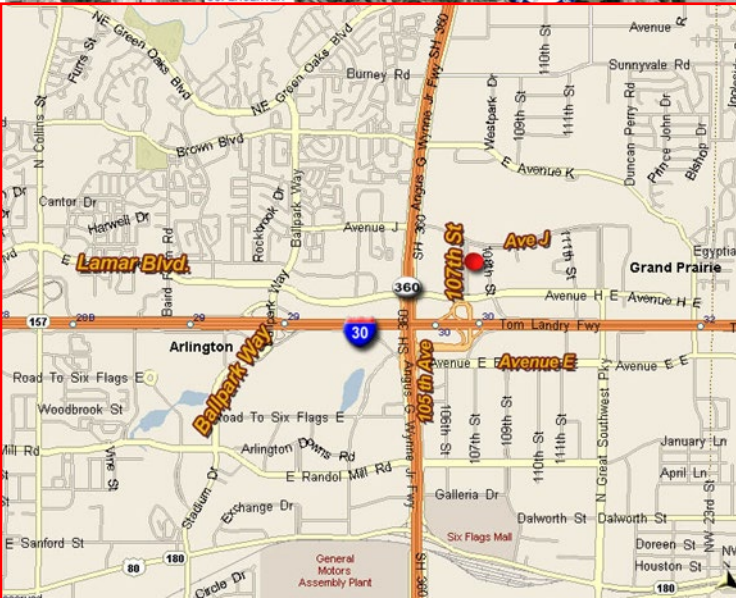
RETAIL PROPERTY SPECIALISTS

301 S Sherman St., #100 • Richardson, TX 75081 • 972.669.8440 • www.quine.com

The information contained herein was obtained from sources believed reliable; however, Quine & Associates, Inc. makes no guarantees, warranties or representation as to the completeness or accuracy thereof. The presentation of the property is submitted subject to errors, omissions, change of price or conditions prior to sale or lease or withdrawal without notice.

INDUSTRIAL WAREHOUSE

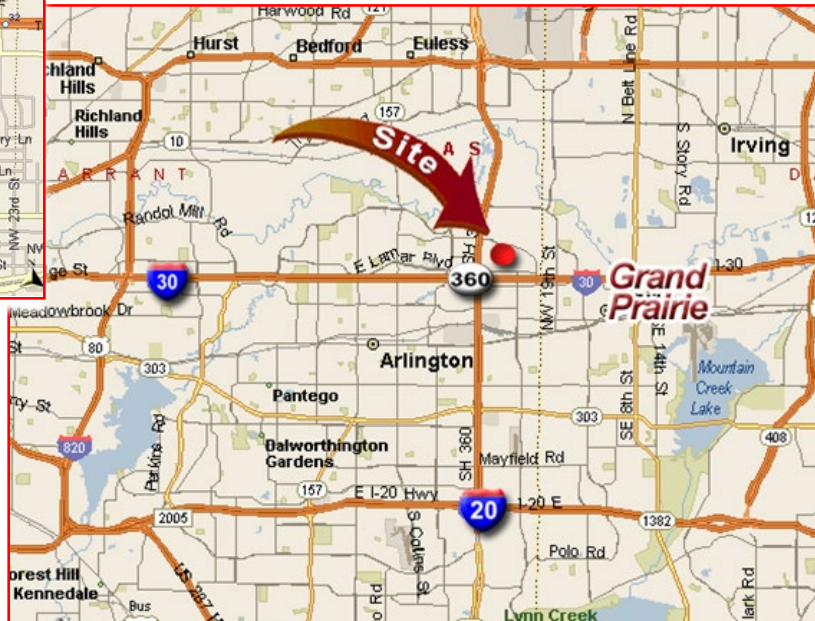
1172 107th Street ■ Grand Prairie TX 75050



Ann Cloud Ngo

ango@quine.com

Texas Real Estate Broker



For more information, contact:

Quine & Associates, Inc.
Texas Real Estate Broker



RETAIL PROPERTY SPECIALISTS 301 S Sherman St., #100 • Richardson, TX 75081 • 972.669.8440 • www.quine.com

The information contained herein was obtained from sources believed reliable; however, Quine & Associates, Inc. makes no guarantees, warranties or representation as to the completeness or accuracy thereof. The presentation of the property is submitted subject to errors, omissions, change of price or conditions prior to sale or lease or withdrawal without notice.